

Cinnamon Bark Essential Oil

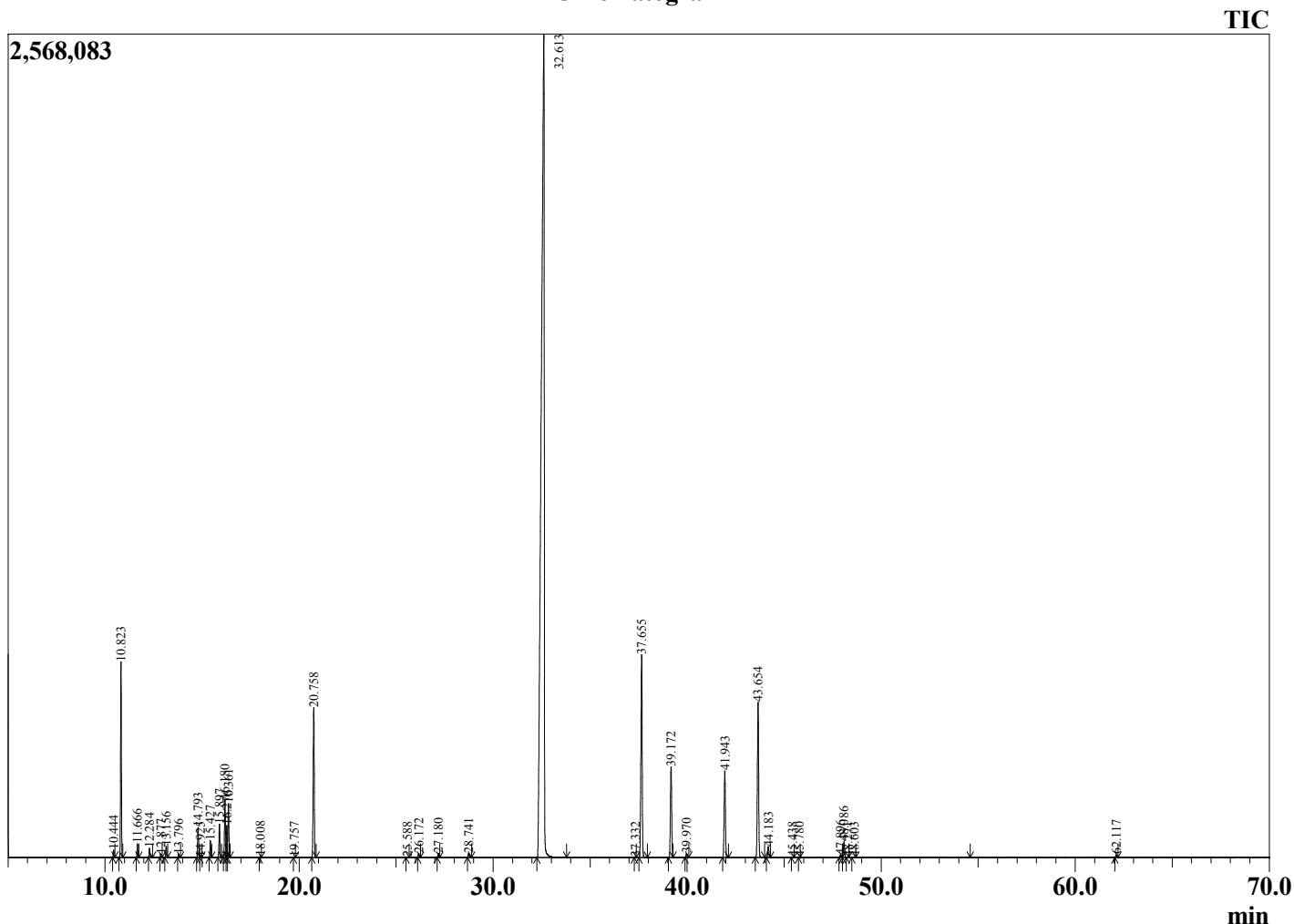


Lot Number: 162436

Date Filled: 08/30/16

Analyst: PS

Chromatogram



TIC

Ret. Time	Compound Name	Area %
10.444	alpha-Thujene	0.15
10.823	alpha-Pinene	4.26
11.666	Camphene	0.29
12.284	Benzaldehyde	0.23
12.877	Sabinene	0.08
13.156	beta-Pinene	0.25
13.796	Myrcene	0.08
14.793	alpha-Phellandrene	0.75
14.925	delta-3-Carene	0.02
15.427	alpha-Terpinene	0.41
15.897	para-Cymene	0.83
16.180	Limonene	1.50
16.276	beta-Phellandrene	0.84
16.361	1,8-Cineole	1.36
18.008	gamma-Terpinene	0.03
19.757	Terpinolene	0.01
20.758	Linalool	4.38
25.588	Borneol	0.01
26.172	Terpinen-4-ol	0.10
27.180	alpha-Terpineol	0.11
28.741	cis-Cinnamaldehyde	0.13
32.613	trans-Cinnamaldehyde	64.81
37.332	alpha-Cubebene	0.02
37.655	Eugenol	6.97
39.172	alpha-Copaene	3.07
39.970	beta-Cubebene	0.12
41.943	beta-Caryophyllene	2.92
43.654	trans-Cinnamyl acetate	5.26
44.183	alpha-Humulene	0.35
45.438	cis-Cadina-1(6),4-diene	0.02
45.780	trans-Cadina-1(6),4-diene	0.01
47.896	Eugenyl acetate	0.08
48.086	delta-Cadinene	0.41
48.271	trans-Calamenene	0.02
48.603	trans-ortho-Methoxy cinnamaldehyde	0.03
62.117	Benzyl benzoate	0.08
		100.00

Comments: The analysis of this Cinnamon Bark batch sample meets the expected chemical profile for authentic essential oil of *Cinnamomum zeylanicum*. No contamination or adulteration was detected.

Approved:

©Copyright 2016 by Essential Oil University. All rights reserved. Any publishing, copying, use, dissemination, or distribution of this report, including online, without the express written permission of Essential Oil University is strictly prohibited.