

Frankincense Essential Oil



Lot Number: 162317

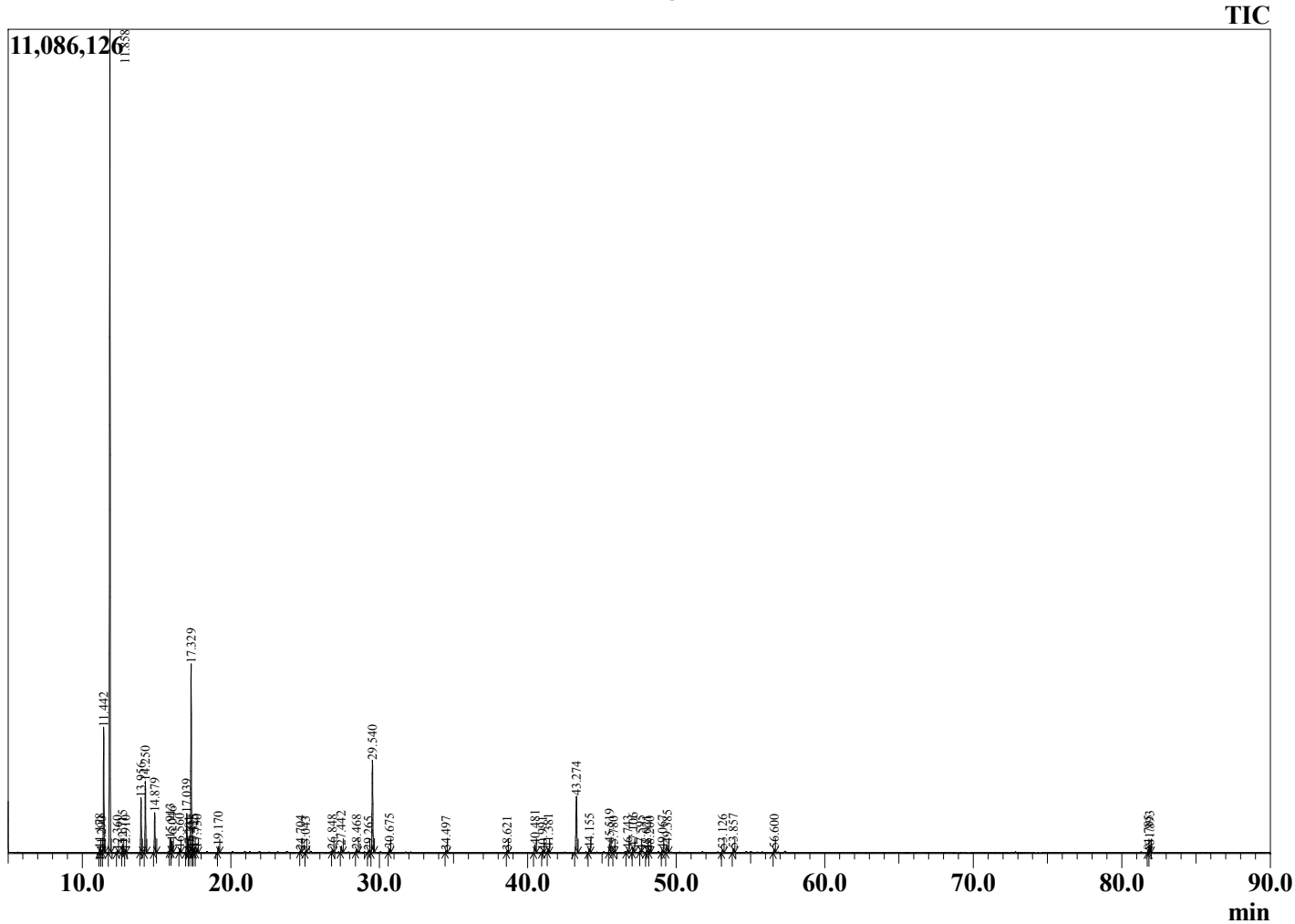
Date Filled: 08/18/16

Analyst: TW

Peak Report

Ret. Time	Compound Name	Area %
11.178	Hashishene	0.19
11.290	Tricyclene	0.09
11.442	alpha-Thujene	6.56
11.858	alpha-Pinene	48.00
12.360	Thujadiene isomer	0.11
12.715	Camphene	0.43
12.910	Thuja-2,4(10)diene	0.12
13.956	Sabinene	3.17
14.250	beta-Pinene	4.07
14.879	Myrcene	2.37
15.913	alpha-Phellandrene	0.76
16.046	delta-3-Carene	0.64
16.560	alpha-Terpinene	0.23
17.039	para-Cymene	2.44
17.201	Octyl methyl ether	0.09
17.329	Limonene	11.07
17.425	beta-Phellandrene	0.19
17.525	1,8-Cineole	0.27
17.730	cis-beta-Ocimene	0.22
19.170	gamma-Terpinene	0.40
24.704	trans-Pinocarveol	0.11
25.043	trans-Verbenol	0.07
26.848	para-Mentha-1,5-dien-8-ol	0.21
27.442	Terpinen-4-ol	0.46
28.468	alpha-Terpineol	0.26
29.265	Verbenone	0.11
29.540	Octyl acetate	6.70
30.675	Decyl methyl ether	0.26
34.497	Bornyl acetate	0.11
38.621	alpha-Cubebene	0.14
40.481	alpha-Copaene	0.63
40.991	alpha-Bourbonene	0.11
41.381	beta-Elementene	0.26
43.274	beta-Caryophyllene	4.62
44.155	trans-alpha-Bergamotene	0.31
45.519	alpha-Humulene	0.72
45.780	Alloaromadendrene	0.09
46.743	trans-Cadina-1(6),4-diene	0.22
47.106	Germacrene D	0.38
47.595	beta-Selinene	0.10
48.021	alpha-Selinene	0.17
48.200	alpha-Murolene	0.11
49.067	gamma-Cadinene	0.18
49.385	delta-Cadinene	0.64
53.126	Caryophyllene oxide	0.24
53.857	Viridiflorol	0.32
56.600	tau-Cadinol	0.24
81.785	Incensole	0.18
81.893	Serratol	0.63
		100.00

Chromatogram



Comments: The analysis of this Frankincense batch sample meets the expected chemical profile for authentic essential oil of Boswellia. No contamination or adulteration was detected.

Approved:

©Copyright 2016 by Essential Oil University. All rights reserved. Any publishing, copying, use, dissemination, or distribution of this report, including online, without the express written permission of Essential Oil University is strictly prohibited.