

Lemon Essential Oil

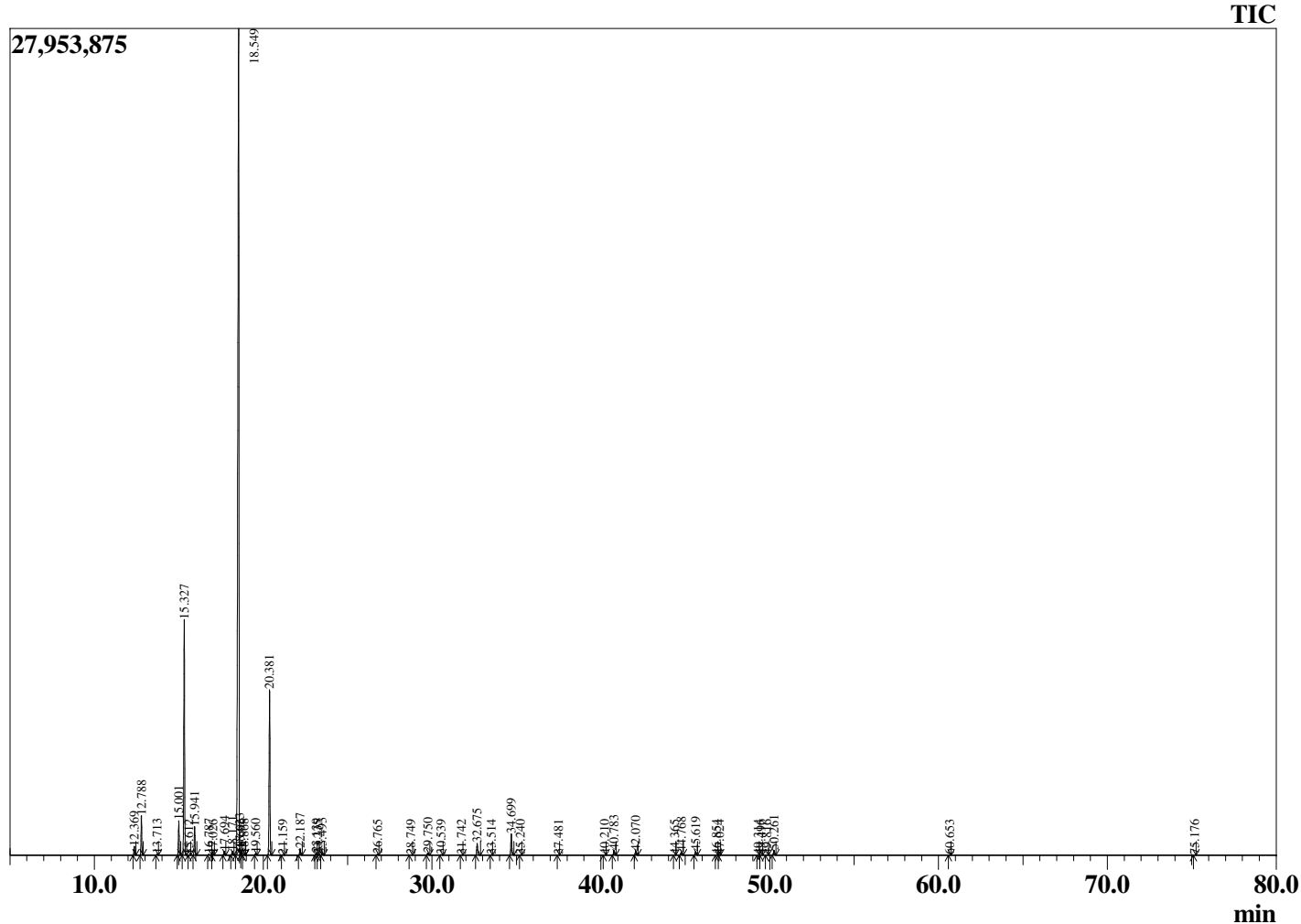
Lot Number: 162944

Date Filled: 10/20/16

Analyst: AC



Chromatogram



Ret. Time	Compound Name	Area %
12.369	alpha-Thujene	0.43
12.788	alpha-Pinene	1.94
13.713	Camphene	0.06
15.001	Sabinene	1.78
15.327	beta-Pinene	12.86
15.612	6-Methyl hept-5-en-2-one	0.02
15.941	Myrcene	1.51
16.787	Octanal + Pseudolimonene	0.07
17.026	alpha-Phellandrene	0.04
17.694	alpha-Terpinene	0.22
18.171	para-Cymene	0.25
18.549	Limonene	65.92
18.623	beta-Phellandrene	0.05
18.696	1,8-cineole	0.02
18.868	cis-beta-Ocimene	0.06
19.560	trans-beta-Ocimene	0.11
20.381	gamma-Terpinene	9.95
21.159	cis-Sabinene hydrate	0.03
22.187	Terpinolene	0.39
23.139	Linalool	0.11
23.235	trans-Sabinene hydrate	0.02
23.493	Nonanal	0.13
26.765	Citronellal	0.06
28.749	Terpinen-4-ol	0.03
29.750	alpha-Terpineol	0.13
30.539	Decanal	0.04
31.742	Nerol	0.01
32.675	Neral	0.77
33.514	Geraniol	0.02
34.699	Geranial	1.39
35.240	Perillaldehyde	0.01
37.481	Undecenal	0.01
40.210	Citronellyl acetate	0.02
40.783	Neryl acetate	0.33
42.070	Geranyl acetate	0.29
44.365	cis-alpha-Bergamotene	0.01
44.768	beta-Caryophyllene	0.21
45.619	trans-alpha-Bergamotene	0.25
46.854	trans-beta-Farnesene	0.01
47.024	alpha-Humulene	0.01
49.314	Valencene	0.01
49.496	Bicyclogermacrene	0.03
49.816	alpha-Bisabolene	0.02
50.261	beta-Bisabolene	0.34
60.653	alpha-Bisabolol	0.01
75.176	Citropten	0.02
		100.00

Comments: The analysis of this Lemon batch sample meets the expected chemical profile for authentic essential oil of Citrus x limon. No contamination or adulteration was detected.

Approved:

Dr. Robert S. Pappas

©Copyright 2016 by Essential Oil University. All rights reserved. Any publishing, copying, use, dissemination, or distribution of this report, including online, without the express written permission of Essential Oil University is strictly prohibited.