

# Wild Orange Essential Oil

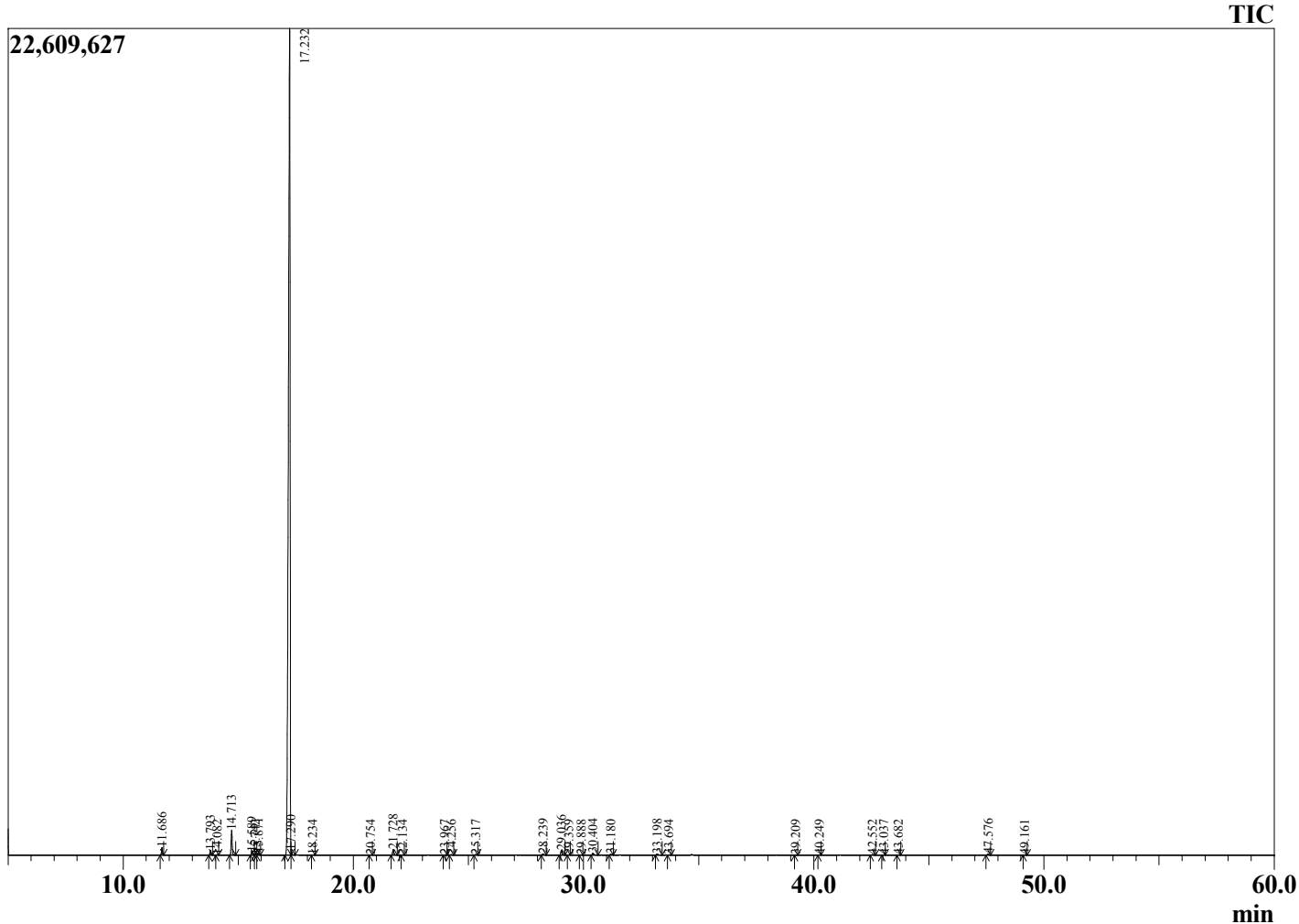


Lot Number: 162585

Date Filled: 09/14/16

Analyst: AC

## Chromatogram



Ret. Time	Compound Name	Area %
11.686	alpha-Pinene	0.49
13.793	Sabinene	0.35
14.082	beta-Pinene	0.03
14.713	Myrcene	1.80
15.589	Octanal	0.25
15.742	alpha-Phellandrene	0.05
15.871	delta-3-Carene	0.18
17.232	Limonene	94.64
17.290	beta-Phellandrene	0.23
18.234	trans-beta-Ocimene	0.02
20.754	Terpinolene	0.03
21.728	Linalool	0.49
22.134	Nonanal	0.03
23.967	cis-Limonene oxide	0.03
24.256	trans-Limonene oxide	0.04
25.317	Citronellal	0.05
28.239	alpha-Terpineol	0.13
29.036	Decanal	0.44
29.359	Octyl acetate	0.01
29.888	trans-Carveol	0.02
30.404	Citronellol	0.19
31.180	Neral	0.08
33.198	Geranial	0.13
33.694	Perillaldehyde	0.03
39.209	Neryl acetate	0.01
40.249	alpha-Copaene	0.03
42.552	Dodecanal	0.05
43.037	beta-Caryophyllene	0.03
43.682	beta-Copaene	0.04
47.576	Valencene	0.11
49.161	delta-Cadinene	0.02
		100.00

Comments: The analysis of this Wild Orange batch sample meets the expected chemical profile for authentic essential oil of *Citrus x sinensis*. No contamination or adulteration was detected.

Approved:

©Copyright 2016 by Essential Oil University. All rights reserved. Any publishing, copying, use, dissemination, or distribution of this report, including online, without the express written permission of Essential Oil University is strictly prohibited.